

# CAPHOSOL®

1 box contains 1x30 or 4x30 doses treatment  
1 dose treatment = 2 single-dose containers, each 15 ml, mixed together

## Pharmaceutical form:

Mouth Rinse. Aqueous solution. Caphosol is a preparation comprising two separately packaged aqueous solutions, a phosphate solution (Caphosol A) and a calcium solution (Caphosol B) which, when both solutions are combined in equal volumes, forms a solution supersaturated with respect to both calcium and phosphate ions.

## Ingredients:

Dibasic Sodium Phosphate 0.032, Monobasic Sodium Phosphate 0.009, Calcium Chloride 0.052, Sodium Chloride 0.569, Purified water qs (%w/w)

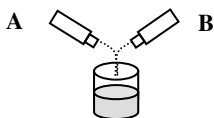
## Actions:

Caphosol is an electrolyte solution designed to moisten, lubricate and clean the oral cavity including the mucosa of the mouth, tongue and oropharynx.

## Indications:

Caphosol is indicated for dryness of the mouth and oropharynx (hyposalivation, xerostomia), regardless of the cause and regardless of whether the condition is temporary or permanent. Caphosol is also indicated as an adjunct to standard oral care in the prevention and treatment of the mucositis that may be caused by radiation or high dose chemotherapy. Relief of dryness of the oral mucosa in these conditions is associated with amelioration of pain.

## Directions for use:



- (1) Mix 1 blue (Caphosol A) and 1 clear single-dose container (Caphosol B) in a clean glass.
- (2) Swish in the mouth thoroughly for 1 min with  $\frac{1}{2}$  of the solution and **spit out**.
- (3) Repeat with the remaining  $\frac{1}{2}$  of the solution and **spit out**.

Use immediately after mixing the single-dose containers.

## Dosage:

4 to 10 times a day. Use for the duration of the treatment or as instructed by physician.

**Interactions with other treatments:**

There are no known interactions with medicinal or other products.

**Special precautions for use:**

Avoid eating or drinking for at least 15 minutes after use. Do not use if the seal of the single-dose container is broken or the single-dose container shows sign of leakage or damage. Contains sodium (71mg per 30ml dose treatment). Patients restricted to a low sodium diet should consult their physician before use. Keep out of the reach of children. Do not inject.

Do not freeze.

No adverse effects are anticipated, if Caphosol is swallowed accidentally.

EUSA Pharma (Europe) Limited  
The Magdalen Centre  
Oxford Science Park  
Oxford OX4 4GA, United-Kingdom  
medinfo@eusapharma.com



2009-06



IDU/CAP/UK/337/02